

# The Merge of Family Newborn Care Unit and Neonatal Intensive Care



FNCU



NICU



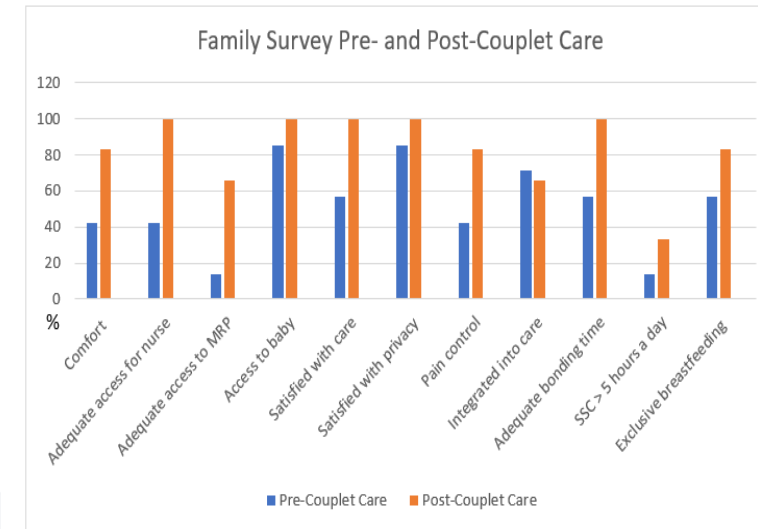
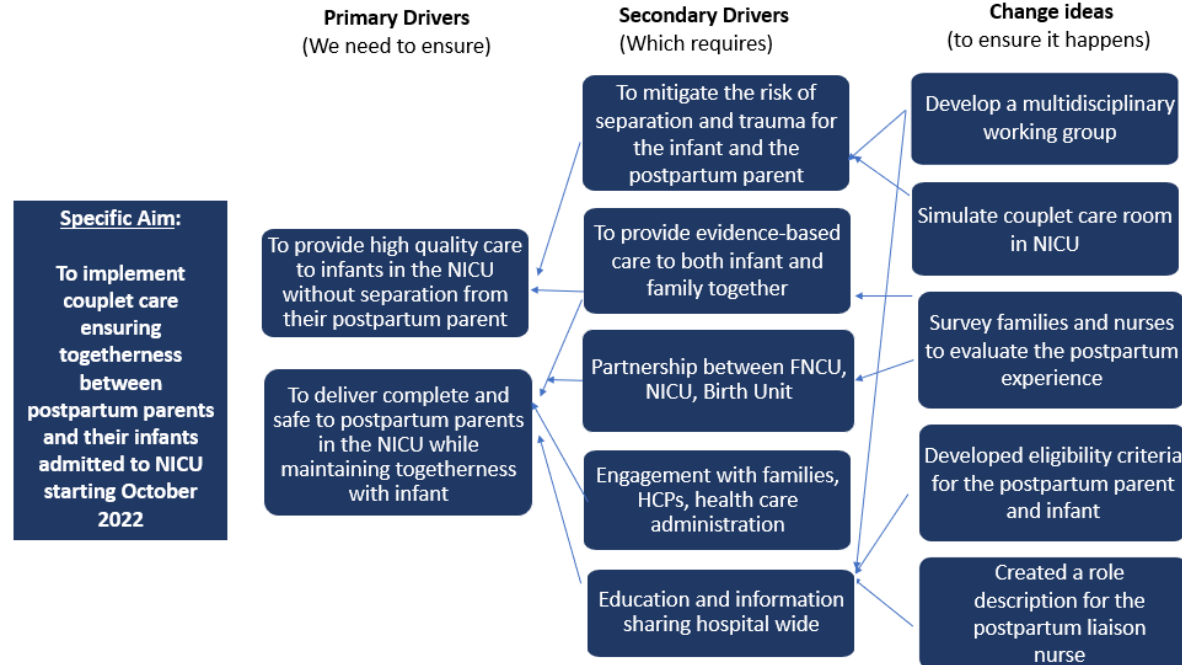
COUPLET CARE



## Unit: COUPLET CARE

Gail MacRae Sly, Allyson Falconer, Cynthia Mann, Tanya Bishop  
IWK Health, Halifax, Canada

Global Aim: To enhance health outcomes of infants and their postpartum parents by maintaining togetherness when a NICU admission is necessary



**Next Steps:**

- Continued promotion of couplet care
- Improved access
- Mitigate barriers (staff shortage, room availability,

Special acknowledgement to the Always Together, Neurodevelopmental Care, and Nursing council committees, the Birth Unit, FNCU, and NICU teams.  
Contact: gail.macrae@iwk.nshealth.ca

Eligibility	
Infants	Post-Partum Parent
<ul style="list-style-type: none"> <li>Requires NICU admission</li> <li>Gestational age <math>\geq</math> 32 weeks</li> <li>5-minute Apgar score <math>&gt;</math> 7</li> <li>Stabilized respiratory status including CPAP</li> <li>IV therapy</li> <li>Singleton</li> <li>End of life</li> </ul>	<ul style="list-style-type: none"> <li>No general anesthetic</li> <li>Clinically stable: no known PPH, hypertensive crisis, co-morbidities that require observation and stabilization</li> <li>Not a bariatric patient</li> <li>Non-Insulin dependent diabetes mellitus</li> <li>Agrees to a post-partum admission to the NICU</li> </ul>

